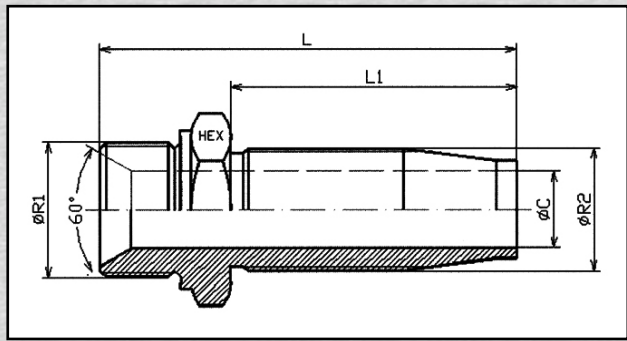


BSP Einschraubzapfen AGR

Zyl. DIN 3852 Form A, mit 60° Konus
Schraubarmatur

BSP Male AGR

with Cone 60°, Reusable



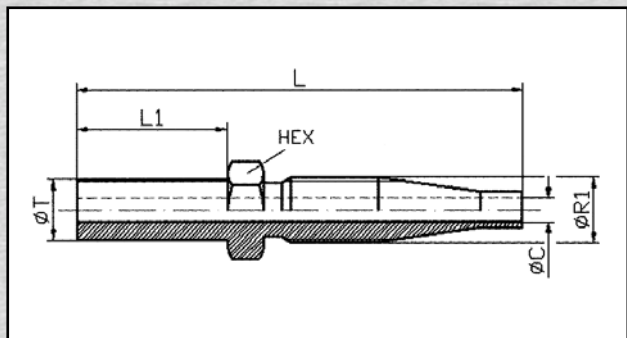
Schlauch Hose DN	Hose inch	Gewinde Thread R1	Gewinde Thread R2	Maßzahlen Dimensions				Artikel Article	Bestell-Nummer Order-No.	Preis Price €
				L	L1	C	HEX			
06	1/4"	1/4"	7/16" UNF	62	43	4	17	Z2G- 4	Z2G 1.4 - DN 06	*)
10	3/8"	3/8"	9/16" UNF	69,5	48	7	22	Z2G- 6	Z2G 3.8 - DN 10	*)
12	1/2"	1/2"	5/8" UNF	75,5	50	8	27	Z2G- 8	Z2G 1.2 - DN 12	*)
20	3/4"	3/4"	M22x1,5	89,5	63	14	32	Z2G-12	Z2G 3.4 - DN 20	*)
25	1"	1"	29.9 UNF	103	71	19	41	Z2G-16	Z2G 1.1 - DN 25	*)

Rohrstutzen metrisch

RSL / BEL, Schraubarmatur, DIN 2353

Straight Standpipe Reusable

(DIN 2353), metric



Schlauch Hose DN	Hose inch	Gewinde Thread R1	Rohr Pipe T. MET.	Maßzahlen Dimensions				Artikel Article	Bestell-Nummer Order-No.	Preis Price €
				L	L1	C	HEX			
06	1/4"	7/16" UNF	08	74	25	4	14	ZE-08- 4	ZE-BE 08 - DN 06	*)
06	1/4"	7/16" UNF	10	74	25	4	14	ZE-10- 4	ZE-BE 10 - DN 06	*)
10	3/8"	9/16" UNF	10	80	25	7	17	ZE-10- 6	ZE-BE 10 - DN 10	*)
10	3/8"	9/16" UNF	12	82	27	7	17	ZE-12- 6	ZE-BE 12 - DN 10	*)
10	3/8"	9/16" UNF	15	82	27	7	17	ZE-15- 6	ZE-BE 15 - DN 10	*)
12	1/2"	5/8" UNF	15	86	27	8	19	ZE-15- 8	ZE-BE 15 - DN 12	*)
20	3/4"	M22x1.5	22	104,5	31,5	14	27	ZE-22-12	ZE-BE 22 - DN 20	*)

*) Bitte Preisliste anfordern!

*) Please, request price list!