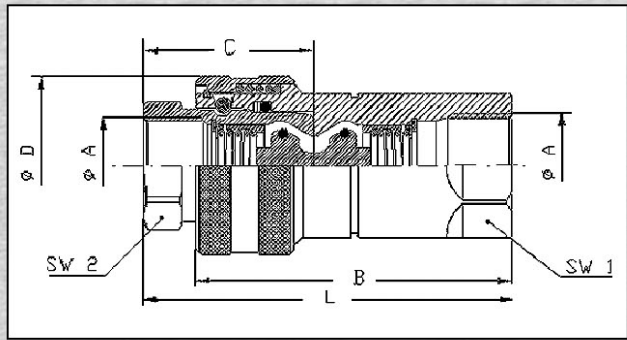


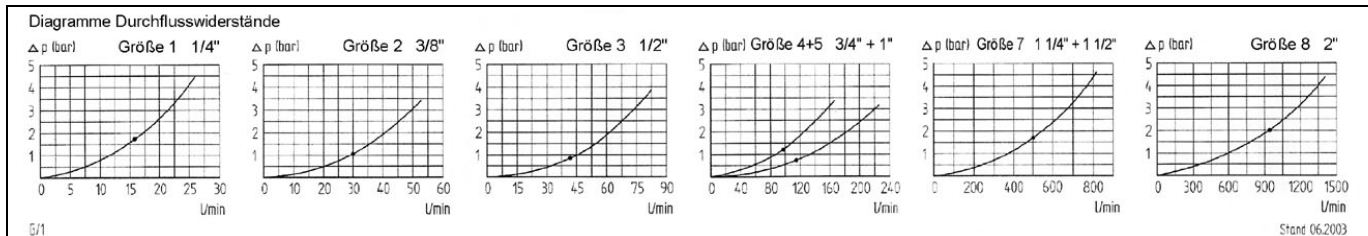
## Schnellverschluß- kupplung ISO "B"

**Quick connect  
couplings ISO B**



Schnellverschlußkupplung in Edelstahl AISI 316L, austauschbar nach ISO 7241-1 „B“. O-Ring in Viton (FPM), Stützring in PTFE, Arbeitstemperaturen von -30° C bis +150° C.

*Material: stainless steel AISI 316. These couplings are the most used in off shore, industry and chemical. Interchangeable to ISO 7241-1 "B" Standard seals in VITON rubber and pure PTFE. Working temperature with standard seals from -30° C to +150° C.*



Größe Size DN	Ø A BSP inch	Maße / Dimensions							M kg	P bar	Bestell-Nummer / Order-No.		Preis / Price €	
		B mm	C mm	Ø D mm	L mm	SW1 mm	SW2 mm	SM mm <sup>2</sup>			Muffe Female	Stecker Male	Muffe Female	Stecker Male
02	1/8"	50	31	23	61,5	15	15	13	0,11	300	ISOB18F	ISOB18M	*)	*)
04	1/4"	57	39	28	72	19	19	22	0,17	300	ISOB14F	ISOB14M	*)	*)
06	3/8"	64	42,3	35	78	22	22	42	0,29	250	ISOB38F	ISOB38M	*)	*)
08	1/2"	72	49	42	90	27	27	95	0,50	250	ISOB12F	ISOB12M	*)	*)
12	3/4"	86	58	51,5	105	34	34	138	0,85	250	ISOB34F	ISOB34M	*)	*)
16	1"	102	68	60	125	41	41	230	1,25	200	ISOB10F	ISOB10M	*)	*)
20	1 1/4"	126	126	75	198	65	65	950	3,70	140	ISOB114F	ISOB114M	*)	*)
24	1 1/2"	126	126	75	198	65	65	950	3,70	140	ISOB112F	ISOB112M	*)	*)
32	2"	124	124	105	222	90	90	1880	8,00	90	ISOB20F	ISOB20M	*)	*)

\*) Bitte Preisliste anfordern!  
\*) Please, request price list!