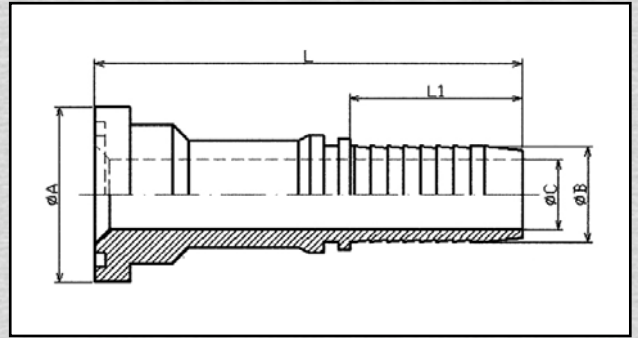


SAE Flansch 6000 PSI

DIN 20078 S
SFS

SAE Straight Flange

Serie 6000 PSI



Schlauch Hose		Flanschbund Flange DN	L	Maßzahlen Dimensions			Artikel Article	Bestell-Nummer Order-No.	Preis Price €
DN	inch			L1	A	C			
12	1/2"	1/2"	81	29,5	32	9,5	842820808	SFS 31.8 - DN 12	*)
12	1/2"	3/4"	85,5	29,5	41	9,5	842821208	SFS 41.3 - DN 12	*)
20	3/4"	3/4"	104,5	39	41	15	842821212	SFS 41.3 - DN 20	*)
20	3/4"	1"	108,3	39	47,5	15	842821612	SFS 47.6 - DN 20	*)
25	1"	1"	116,3	47	47,5	19	842821616	SFS 47.6 - DN 25	*)
25	1"	1 1/4"	129	47	54	19	842822016	SFS 54.0 - DN 25	*)
32	1 1/4"	1 1/4"	138	54,5	54	26	842822020	SFS 54.0 - DN 32	*)
32	1 1/4"	1 1/2"	146,5	54,5	63,5	26	842822420	SFS 63.5 - DN 32	*)
40	1 1/2"	1 1/2"	150,5	58	63,5	32	842822424	SFS 63.5 - DN 40	*)
40	1 1/2"	2"	156,5	58	79,5	32	842823224	SFS 79.4 - DN 40	*)
50	2"	2"	173,4	72	79,5	44	842823232	SFS 79.4 - DN 50	*)

*) Bitte Preisliste anfordern!
*) Please, request price list!