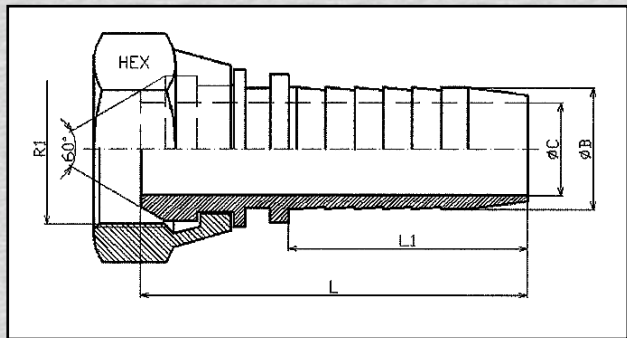


Dichtkopf DKR

mit zölliger Überwurfmutter DKR 60° Konus

Swivel Female

BSP 60° Cone



Schlauch Hose		Gewinde Thread	Maßzahlen Dimensions				Artikel Article	Bestell-Nummer Order-No.	Preis Price
DN	inch	R1	L	L1	C	HEX		€	
05	3/16"	1/8"	38,5	24	3	14	841000203	DKR 1.8 - DN 05	*)
06	1/4"	1/8"	43	28	4	14	841000204	DKR 1.8 - DN 06	*)
08	3/16"	1/4"	39,5	24	3	19	841000403	DKR 1.4 - DN 08	*)
06	1/4"	1/4"	44	28	4	19	841000404	DKR 1.4 - DN 06	*)
08	5/16"	1/4"	44,5	28	5,5	19	841000405	DKR 1.4 - DN 08	*)
06	1/4"	3/8"	45,5	28	4	22	841000604	DKR 3.8 - DN 06	*)
08	5/16"	3/8"	46	28	5,5	22	841000605	DKR 3.8 - DN 08	*)
10	3/8"	3/8"	47,5	29,5	7	22	841000606	DKR 3.8 - DN 10	*)
12	1/2"	3/8"	48	29,5	9,5	22	841000608	DKR 3.8 - DN 12	*)
10	3/8"	1/2"	48,5	29,5	7	27	841000806	DKR 1.2 - DN 10	*)
12	1/2"	1/2"	48,5	29,5	9,5	27	841000808	DKR 1.2 - DN 12	*)
16	5/8"	1/2"	53,3	34	12	27	841000810	DKR 1.2 - DN 16	*)
12	1/2"	5/8"	50	29,5	9,5	30	841001008	DKR 5.8 - DN 12	*)
16	5/8"	5/8"	54,8	34	12	30	841001010	DKR 5.8 - DN 16	*)
12	1/2"	3/4"	52	29,5	9,5	32	841001208	DKR 3.4 - DN 12	*)
16	5/8"	3/4"	56,8	34	12	32	841001210	DKR 3.4 - DN 16	*)
20	3/4"	3/4"	63	39	15	32	841001212	DKR 3.4 - DN 20	*)
20	3/4"	1"	66,5	39	15	41	841001612	DKR 1.1 - DN 20	*)
25	1"	1"	74,5	47	19	41	841001616	DKR 1.1 - DN 25	*)
25	1"	1 1/4"	75,5	47	19	50	841002016	DKR 5.4 - DN 25	*)
32	1 1/4"	1 1/4"	84,5	54,5	26	50	841002020	DKR 5.4 - DN 32	*)
40	1 1/2"	1 1/4"	88,5	54,5	26	55	841002420	DKR 5.4 - DN 40	*)
40	1 1/2"	1 1/2"	92	58	32	55	841002424	DKR 3.2 - DN 40	*)
40	1 1/2"	2"	91,5	58	32	70	841003224	DKR 4.2 - DN 40	*)
50	2"	2"	105	72	44	70	841003232	DKR 4.2 - DN 50	*)

*) Bitte Preisliste anfordern!
*) Please, request price list!