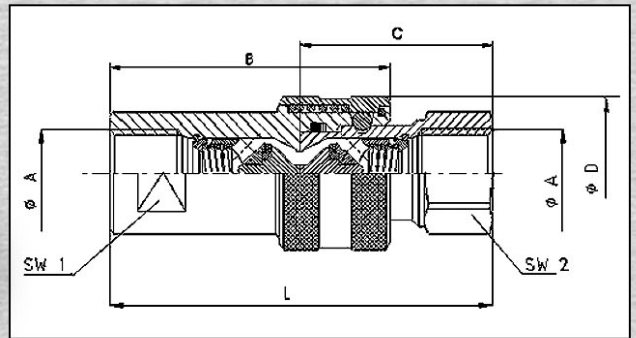


Schnellverschlußkupplung IR ISO "A"

**Quick connect
couplings IR**



Anwendungen in Landwirtschaft und Industrie. Austauschbar nach ISO 7241-1 „A“ Stecker, Material: Edelstahl AISI 316L, Dichtung: Viton (FPM) und PTFE, Arbeitstemperaturen von -30° C bis +150° C.

Material: stainless steel AISI 316. These couplings are the most used both in agriculture and industry. Interchangeable to ISO 7241-1 "A" Male. Standard seals in VITON rubber and pure PTFE. Working temperature with standard seals from -30° C to +150° C.

Größe Size DN	Ø A BSP inch	Maße / Dimensions								M kg	P bar	Bestell-Nummer / Order-No.		Preis / Price €	
		B mm	C mm	Ø D mm	L mm	SW1 mm	SW2 mm	SM mm ²	Muffe Female			Stecker Male	Muffe Female	Stecker Male	
04	1/4"	54	38	27	75	19	19	24	0,185	315	IR14F	IR14M	*)	*)	
06	3/8"	60	40	30	80	24	22	45	0,235	315	IR38F	IR38M	*)	*)	
08	1/2"	70	48	38	96	27	27	90	0,400	250	IR12F	IR12M	*)	*)	
12	3/4"	82	55	45	110	36	36	140	0,725	250	IR34F	IR34M	*)	*)	
16	1"	99	65	52	132	41	41	220	1,100	200	IR10F	IR10M	*)	*)	

*) Bitte Preisliste anfordern!
*) Please, request price list!